



Wright Marshall  
Estate Agents

## 6 Ruskin Court Knutsford WA16 6HN



**Offers Over £280,000**

1 Princess Street, Knutsford, Cheshire, WA16 6BY  
T. 01565 621624  
[Knutsford@wrightmarshall.co.uk](mailto:Knutsford@wrightmarshall.co.uk) /  
[Cheshirelettings@wrightmarshall.co.uk](mailto:Cheshirelettings@wrightmarshall.co.uk)





Perfectly positioned in the centre of Knutsford, this generously proportioned first-floor apartment offers the ideal combination of privacy and convenience.

Occupying a prime location just a stone's throw from the picturesque Tatton Park, the property is accessed via a communal entrance hallway with a secure telecom entry system. From here, a private front door opens into a welcoming hallway with useful storage.

The heart of the home is the notably spacious lounge/dining room, where large rear windows flood the space with natural light. This flows seamlessly into a well-appointed kitchen/breakfast room, featuring a range of integrated appliances and polished black granite worktops.

The apartment offers two generous double bedrooms, each with fitted wardrobes, and is served by a stylish three-piece white bathroom suite with shower over the bath.

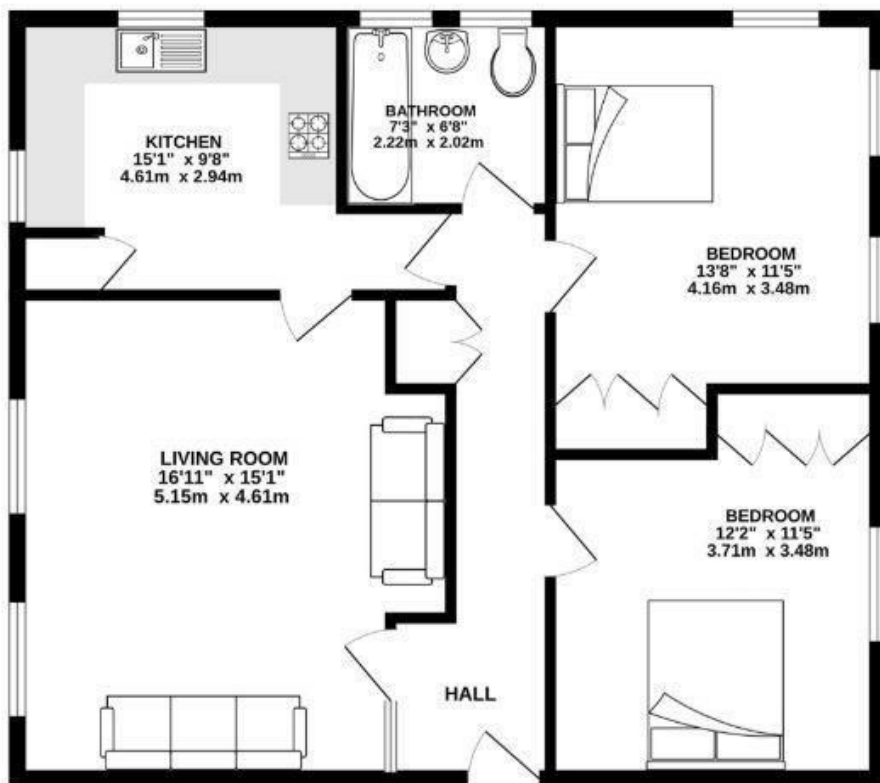
Externally, the property benefits from both allocated parking and a private garage.







**FIRST FLOOR**  
797 sq.ft. (74.0 sq.m.) approx.



TOTAL FLOOR AREA: 797 sq.ft. (74.0 sq.m.) approx.  
Whilst every attempt has been made to ensure the accuracy of the floorplan contained herein, measurements of doors, windows, stairs and any other items are approximate and no responsibility is taken for any error, omission or mis-statement. This plan is for illustrative purposes only and should be used as a guide for any prospective purchaser. The services, systems and appliances shown have not been tested and no guarantee as to their operation or efficiency can be given.  
Made with: Metaphor C2020

These particulars, whilst believed to be accurate are set out as a general outline only for guidance and do not constitute any part of an offer or contract. Intending purchasers should not rely on them as statements of representation of fact, but must satisfy themselves by inspection or otherwise as to their accuracy. No person in this firm's employment has the authority to make or give any representation or warranty in respect of the property.